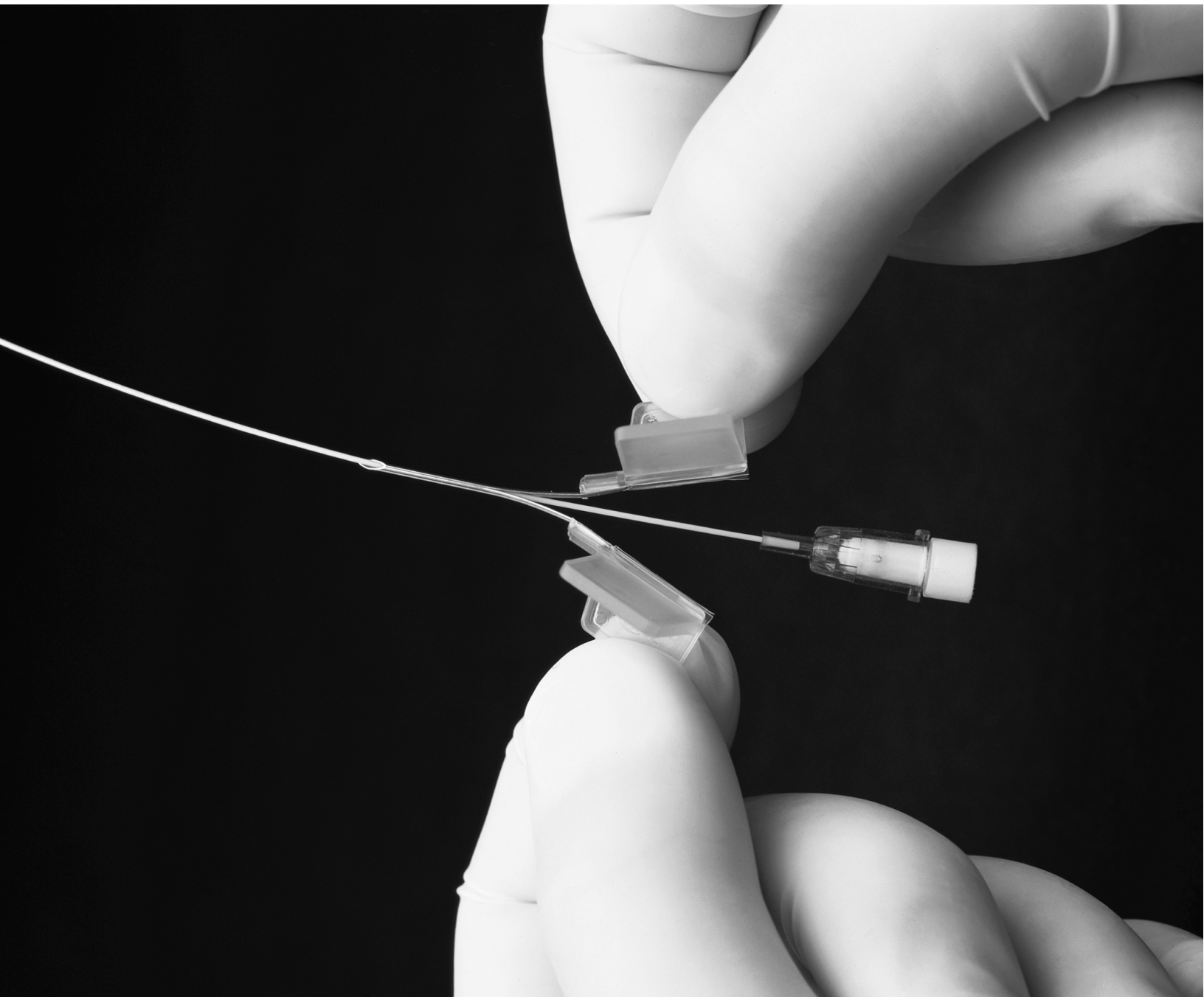


Vascular Access



- IN-10** Polyethylene Tubing, .011" ID x .024" OD, 10ft Lengths
- IN-10N** Introduction needle, sterile, 19g x 1"
- IN-10C** Infusion Cannula, blunt, 30g x 1"

- IN-20** Polyethylene Tubing, .015" ID x .043" OD, 10ft Lengths
- IN-20N** Introduction needle sterile, 16g x 1"
- IN-20C** Infusion Cannula, blunt, 27g x 1"

- IN-50** Polyethylene Tubing, .023" ID x .038" OD, 10ft Lengths
- IN-50N** Introduction needle, sterile, 16g x 1"
- IN-50C** Infusion Cannula, blunt, 24g x 1"



- PN-7922** Pipet/Infusion Needle, 30g, length 1"
- PN-7925** Pipet/Infusion Needle, 27g, length 1"
- PN-7930** Pipet/Infusion Needle, 24g, length 1"
- PN-7933** Pipet/Infusion Needle, 20g, length 4"
- PN-7936** Pipet/Infusion Needle, 18g, length 4"
- PN-7939** Pipet/Infusion Needle, 16g, length 4"
- PN-7941** Pipet/Infusion Needle, 14g, length 4"

- RS-5255** SINGLY heart holding forcep length 6"



RS-5255 Shown



IN-517 Splitable Introducer Cannula
 17GA x 22mm
 OD 1.50mm
 I D 1.34mm
 red



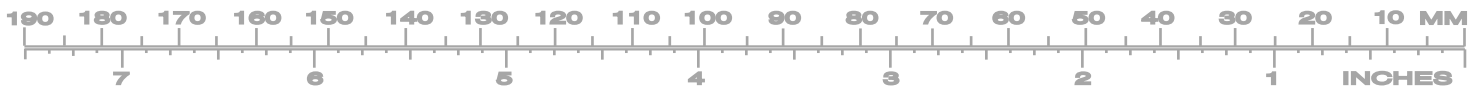
IN-520 Splitable Introducer Cannula
 20GA x 17mm
 OD 0.95mm
 I D 0.75mm
 green



IN-522 Splitable Introducer Cannula
 22GA x 17mm
 OD 0.70mm
 I D 0.50mm
 blue



1-800-424-2984
www.roboz.com



32 ga micro injection needles uses:

- portal vein injections
- thymus injections
- bile duct injections
- blood/fluid extractions

Advantages:

- potential for clotting is reduced
- reduces trauma
- greater control of injection site
- greater volume control



IN-900

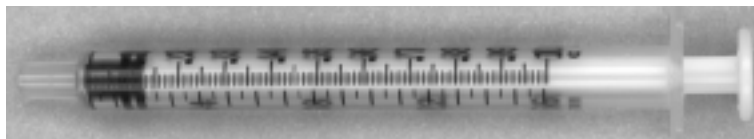
Micro Injection Needle
 .009" OD x .003" ID
 32 ga
 needle length 10mm
 use with IN-910

straight



IN-905

45 deg angle



IN-910

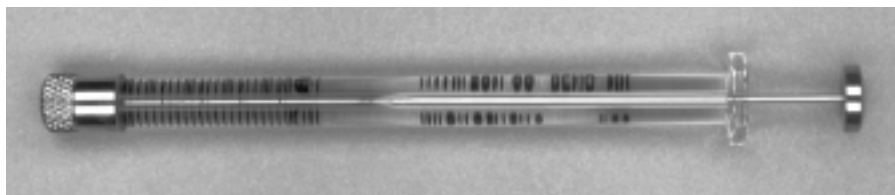
IN-910

Syringe
 plastic
 Volume 1mm
 for use with IN-900
 and IN-905 needles

Photo Not Available For IN-940

IN-940

Micro Injection Needle
 straight
 .009" OD x .003" ID
 32 ga
 needle length 12mm
 use with IN-950



IN-950

IN-950

Syringe
 glass
 5 microliters
 for use with IN-940
 needles





Specifications

Pump Type	Infusion
Max.No. Syringes	One
Syringe Size	.5µL to 60mL
Linear Force	22lbs.
Min Flow Rate	> .1µL/hr
Max Flow Rate	8.87mL/min
Accuracy	± 3%
Reproducibility	± 1%
Power	9Volt DC @ 1000mA
Dimensions	9.0" x 5.75" x 4.93"
Weight	3.9 lbs.
Steps per Revolution	400

IN-1000 Advance Infusion Pump

The **Advance Infusion Pump Series 1200** is a simple, accurate, affordable single syringe pump. Easily input the syringe diameter, volume, and time into the large number keypad that no other pump on the market has and let Advance do the rest.

No need to scroll through long lists of syringe sizes and infusion rates again with Advance!

IN-1010 Advance Infusion Table

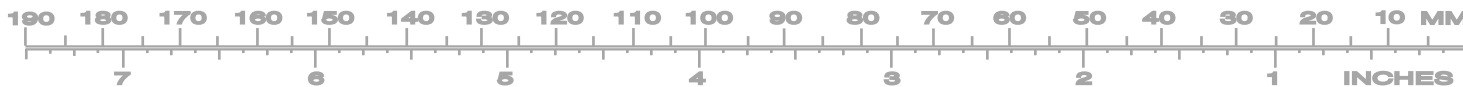
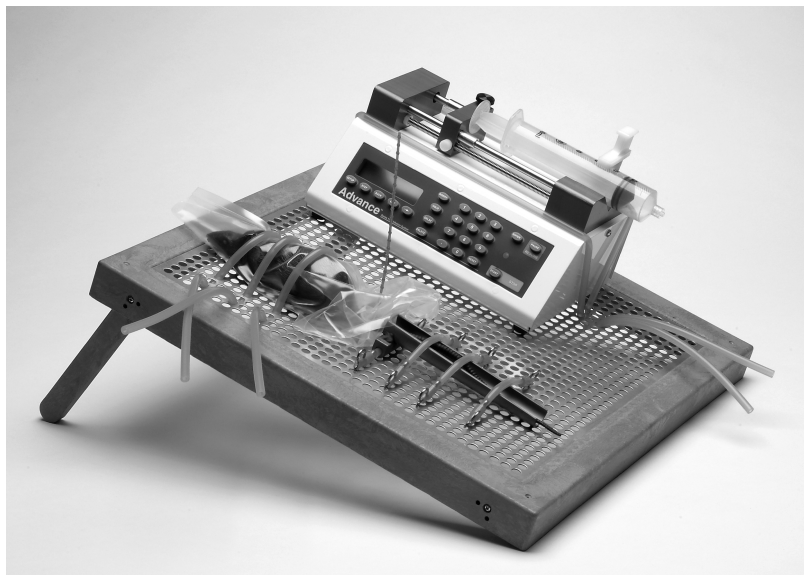
The **Advance Infusion Table** is the latest design in tail infusions for rats. This unique setup has allowed for tail infusions lasting up to three hours.

Features

- 4 folding legs for optional angled display and compact storage
- Easy customization using the silicone tubing and perforated table top
- Cage washable

Dimensions

15 3/4" x 15 3/4" square table top (40cm x 40cm)
 Height with legs open, 6 1/2" (16.5cm)



**COMPARISON OF
MILLIMETERS TO INCHES**

MM	INCHES	MM	INCHES
0.33	.013	6	.236
0.5	.020	6.33	.249
0.67	.026	6.5	.256
1	.039	6.67	.263
1.33	.052	7	.275
1.5	.059	7.33	.288
1.67	.066	7.5	.295
2	.079	7.67	.302
2.33	.092	8	.315
2.5	.098	8.33	.328
2.67	.105	8.5	.335
3	.118	8.67	.341
3.33	.131	9	.354
3.5	.138	9.33	.367
3.67	.144	9.5	.374
4	.157	9.67	.380
4.33	.170	10	.394
4.5	.177	10.33	.407
4.67	.184	10.67	.420
5	.197	11	.433
5.33	.210	11.33	.446
5.5	.216	11.67	.459
5.67	.223	12	.472

**COMPARISON OF
INCHES TO MILLIMETERS**

INCHES	MM	INCHES	MM
1/32	0.79	17/32	13.49
1/16	1.59	9/16	14.29
3/32	2.38	19/32	15.08
1/8	3.18	5/8	15.88
5/32	3.97	21/32	16.67
3/16	4.76	11/16	17.46
7/32	5.56	23/32	18.26
1/4	6.35	3/4	19.05
9/32	7.14	25/32	19.84
5/16	7.94	13/16	20.64
11/32	8.73	27/32	21.43
3/8	9.53	7/8	22.22
13/32	10.32	29/32	23.02
7/16	11.11	15/16	23.81
15/32	11.91	31/32	24.61
1/2	12.7	1"	25.4

**COMPARISON OF
INCHES TO
CENTIMETERS**

INCHES	CM
1	2.54
2	5.08
3	7.62
4	10.16
5	12.7
6	15.24
7	17.78
8	20.32
9	22.86
10	25.40
11	27.94
12	30.48
13	33.02
14	35.56
15	38.10

**COMPARISON OF
CENTIMETERS TO
INCHES**

CM	INCHES
1	.3937
2	.7874
3	1.1811
4	1.5748
5	1.9685
6	2.3622
7	2.7559
8	3.1496
9	3.5433
10	3.937
20	7.8740
30	11.811
40	15.748

